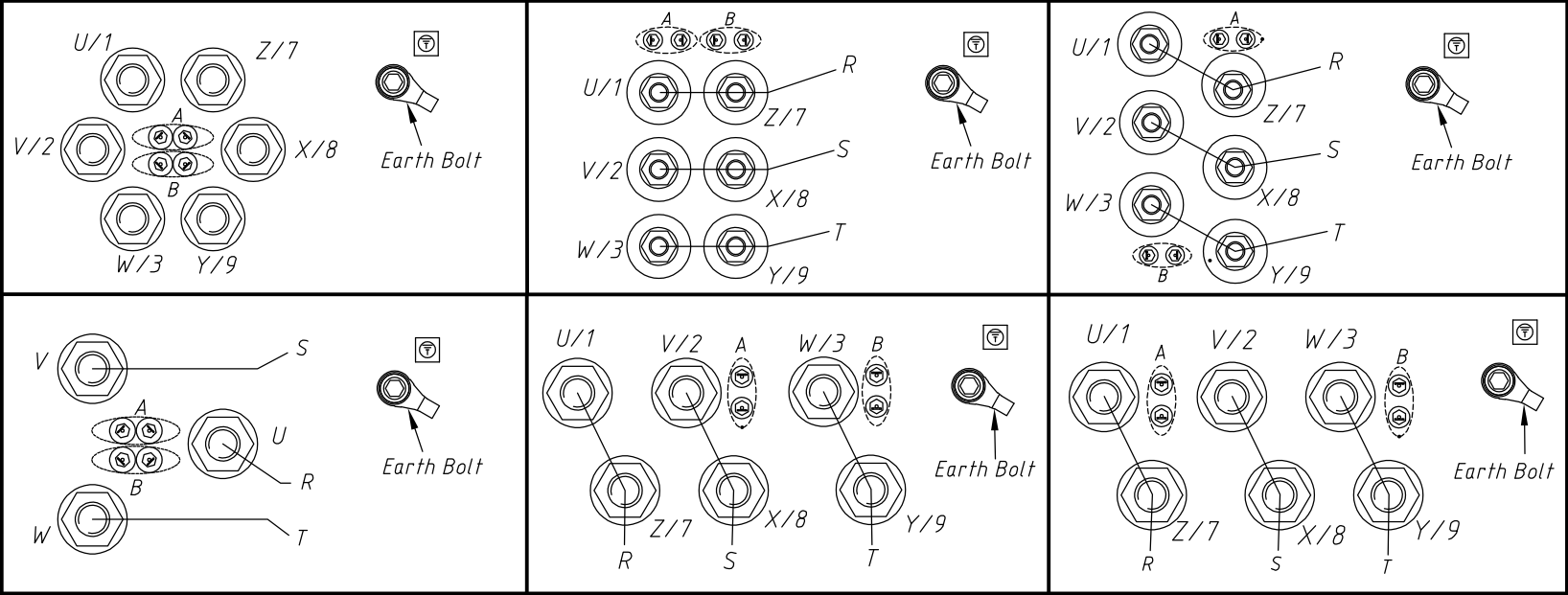
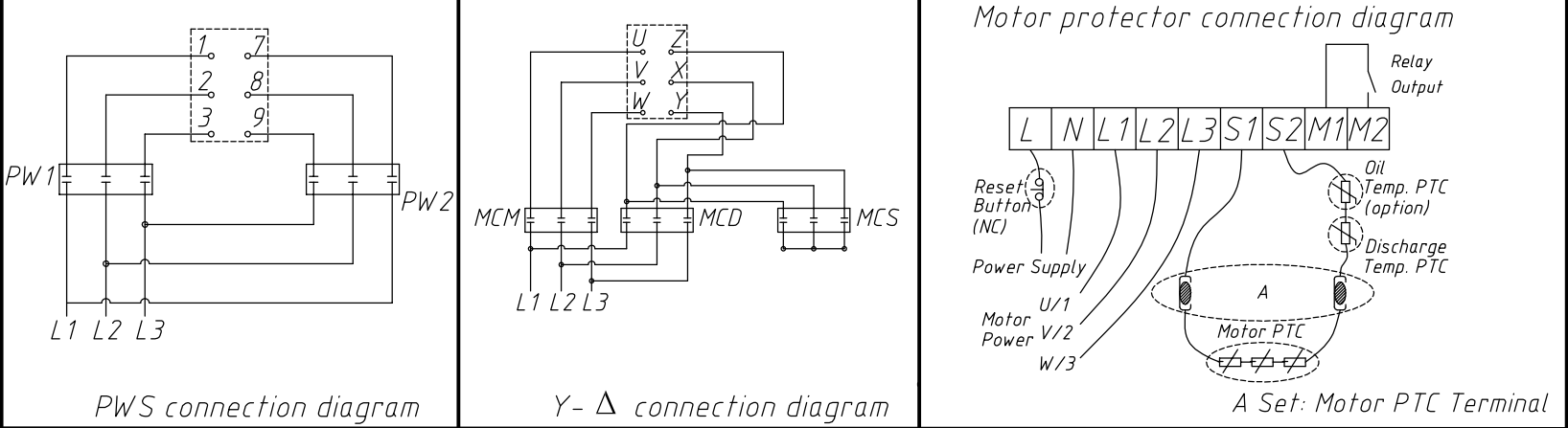


Caution Of Power Terminal		Caution Before Operation	
1	Do not strike the power terminal	1	Verify the voltage and frequency.
2	Please apply silicone sealant to the power terminals if condensation appears.	2	Verify the capacity of cables and M.C.
3	Please use two wrenches to tighten the nuts on both sides of each terminal at once to prevent damaging the power bolt.	3	Check the insulation of panel and motor.
		4	Check the connections of compressor protectors of motor, discharge temperature and pressure.
		5	Check the oil level.
		6	Check the rotating direction of motor(during operation).
		7	Verify the operating sequence of the solenoid valves (during operation).
		While any abnormal conditions which occur during operation, stop and adjust them before restarting.	

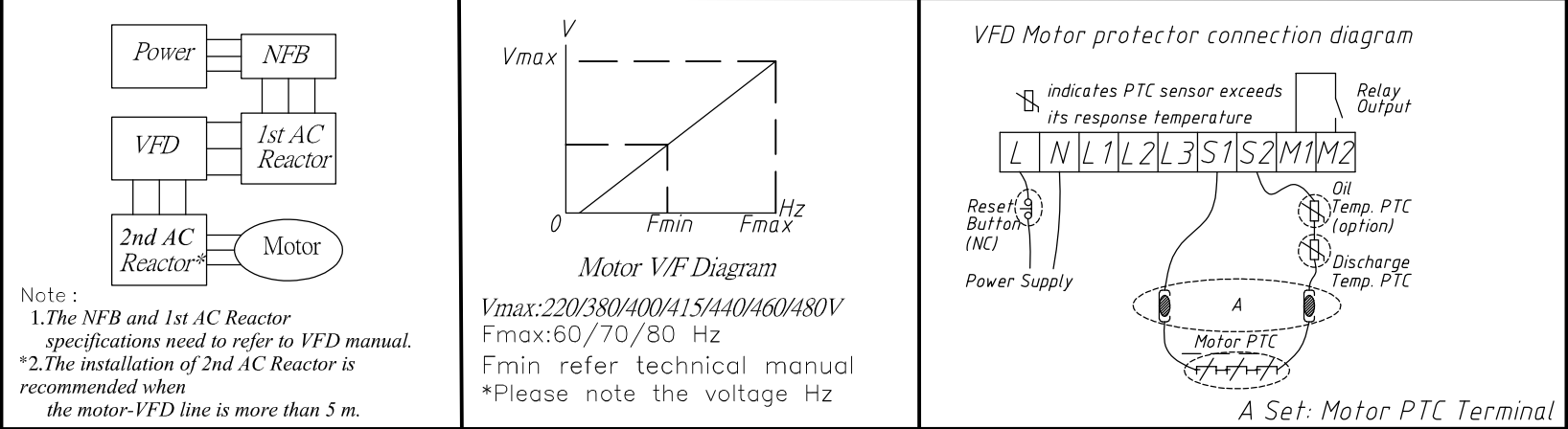


A:PTC
 B:Pt100Ω / Pt1000Ω /NTC(Option)

FIXED—SPEED APPLICATION



VARIABLE—SPEED APPLICATION



INFORMATION		
1. Compressor standby : Green-light	4.Reset	Red-light Orange-light
2. Compressor running : Green-light flash	In 24 hours,	●○○○○○ ●○○○○○
3. Error code :	a. 1st, 5±1mins delay	●○○○○○ ●●●○○○
a. PTC temperature error	b. 2nd, 60±12mins delay	●○○○○○ ●●●●○○
b.Reset delay	c. 3rd , lockout	●●○○○○ ●○○○○○
c. Sensor input error	5.Voltage	●●○○○○ ●●○○○○
d. Phase sequence	a. L/L1, N/L2 : 50/60Hz 115~240V±10%	●●●○○○ ●○○○○○
e. Phase failure	b. U/1, V/2, W/3 : 50/60Hz 200~690V±10%	●●●○○○ ●○○○○○
f. Supply voltage too low		